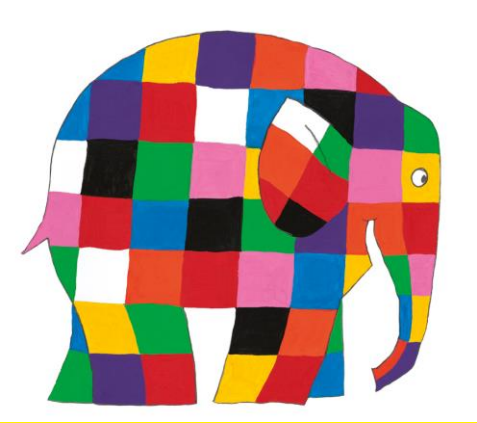


# Spring Term in Reception

Learning through exploring and experiences

Miss Huntly and Miss Patterson

# What have we been learning in Reception?



We started our new term by meeting Elmer. Elmer is a funny, kind friend to have and we have been taking part in a lot of activities based on Elmer's adventures.

We discovered some amazing things! Rainbows can happen without sun and rain too!



There were lots of ways to think about how Elmer looks.....



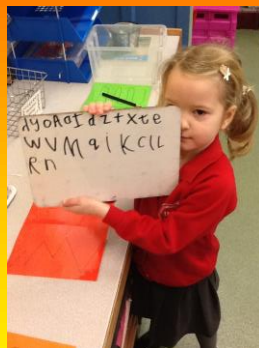
We were very busy!



Practicing using our fingers for small movements helps us when we come to write.



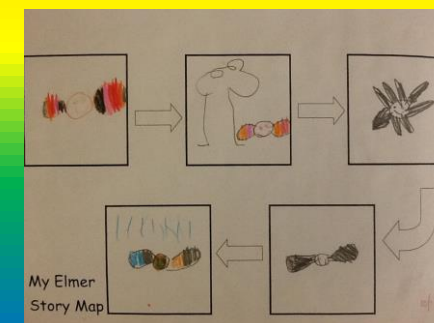
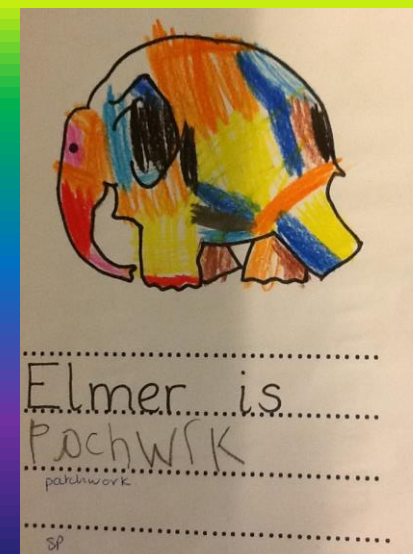
By looking at traditional African jewellery, we created our own necklaces



We have been on Safari in Africa and explored Kampala in Uganda using Google Earth!



There has been lots of writing too! We made story maps of Elmer stories and can retell the story using these!





In Maths we have been working on doubling and halving and introducing the concept of full, half full and empty.



This week we have also been thinking about the Big Bird Watch and making lots of treats for the birds in our gardens!

Mr Hodgson is teaching us PE this half term and we have been working on balances and rolls!





# What are we aiming for?

By the end of Reception, children are assessed in line with the Early Learning Goal - This is what is deemed a "good level of development".

HOWEVER.....

Children learn at their own pace and are all different!

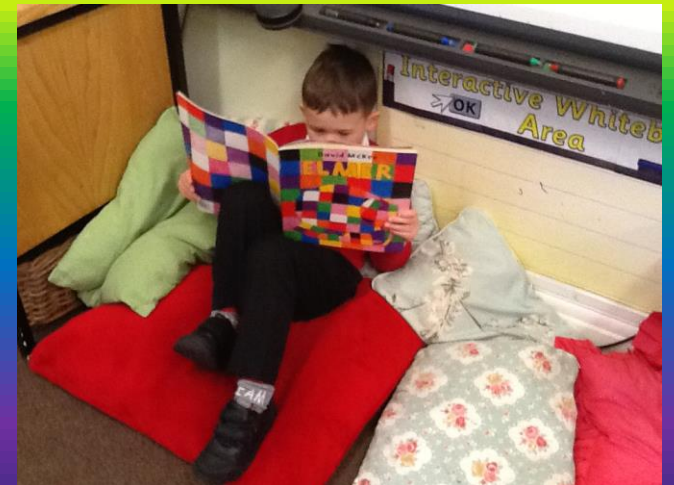
Early Years is the time where children's interests can shape their learning experience!



# Reading

Reading does not always mean your children reading to you although this helps them practice their knowledge learned in school.

By sharing stories with your child, you are helping to create a love of reading for your child, opening a world of imagination and tales for them to enjoy. If they see you enjoying it - they will too!



# General Information

- COLA: 15<sup>th</sup> February
- Water bottles in school every day
- Reading books changed on Fridays
- PE: Wednesday, but this may change so every day is best!
- Field Day: will begin after half term if the weather improves!